

PHUKET DREAM DESTINATION

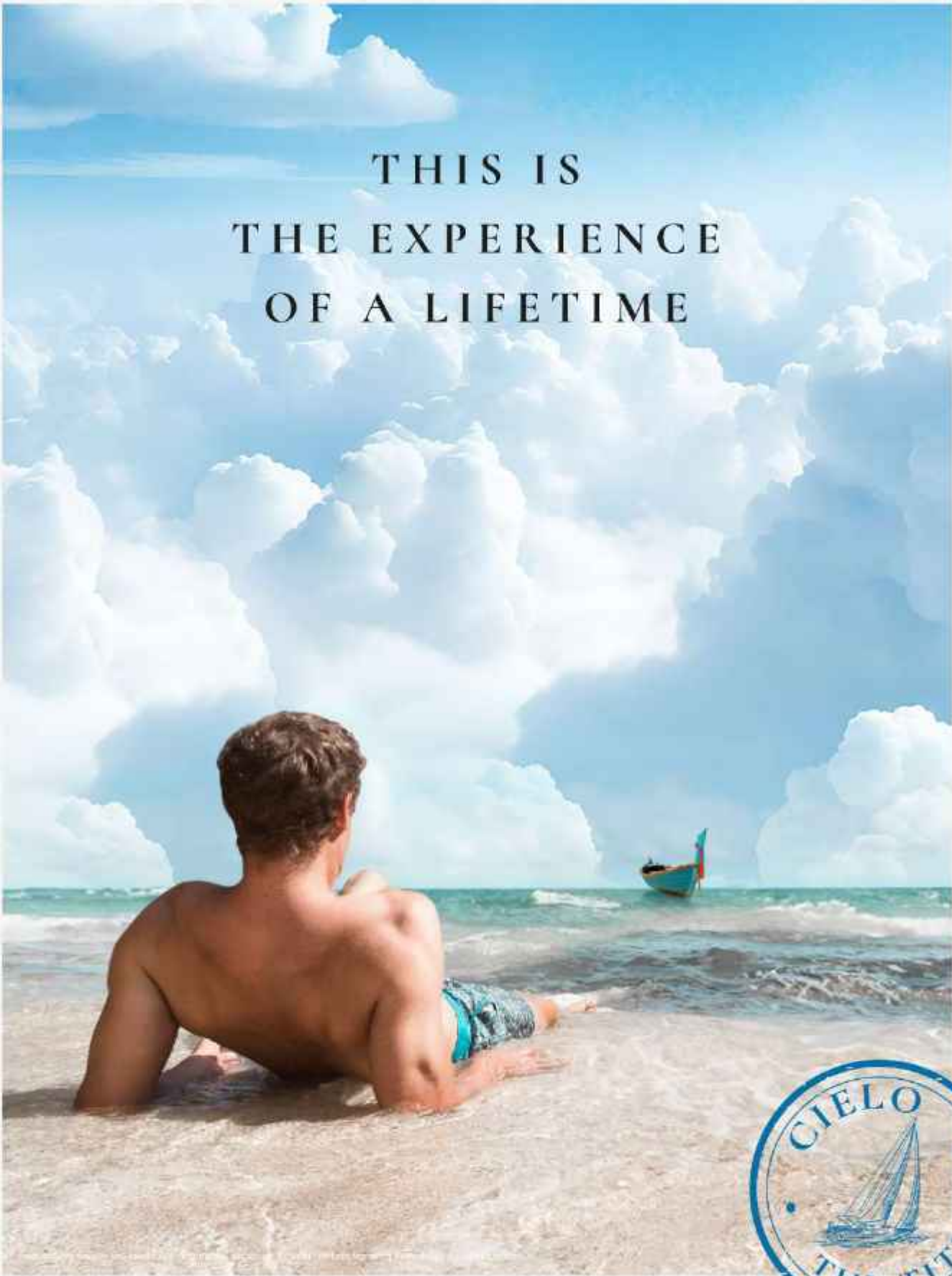
EST.

*the* TITLE  
**CIELO**  
RAWAI

2024



THE BREEZE OF  
BLISSFUL LIVING

A man with short brown hair, shirtless, is lying on his stomach on a sandy beach, looking out at the ocean. In the distance, a small boat with a red and blue sail is on the water. The sky is filled with large, white, fluffy clouds. The text "THIS IS THE EXPERIENCE OF A LIFETIME" is centered in the upper half of the image.

# THIS IS THE EXPERIENCE OF A LIFETIME



A PINNACLE OF BLISSFUL LIVING ON THE PHUKET COAST, WHERE  
MODERN COMFORT BLEND WITH THE ENDLESS HORIZON, FROM THE ALLURE OF AMALFI,  
THE BEAUTY OF VIBRANT SUNSET THAT PAINT THE RAWAI'S "CIELO"



PIXLR 001



001

PIXLR STORY



PIXLR 001



001



CIELO  
•  
THE TIVOLI





RAWAI



## PHUKET DREAM DESTINATION

Located at the southern tip of Phuket, where stunning scenic beauty meets the most famous sunset viewpoint, Rawai fulfills you with energy through thrilling adventures and relaxing leisure activities.

It also embraces the essence of a local fisherman's village and seafood heaven. Rawai is a unique, vibrant destination for a modern lifestyle amidst sea breezes and local charm.

*Cielo.*

# CIELO





# LOCATED IN THE SERENE AND CHARMING AREA OF RAWAI,

The Title Cielo Rawai offers a unique glimpse into Phuket's timeless coastal beauty. Here, you'll experience the tranquil allure of local fishing communities and the breathtaking sunsets at Promthep Cape, renowned as one of the most picturesque spots on the island. Rawai is also a culinary haven, where you can indulge in the freshest seafood every day, making it the perfect place to savor the authentic flavors of this coastal paradise.





LOCATED IN THE HEART OF RAWAI,

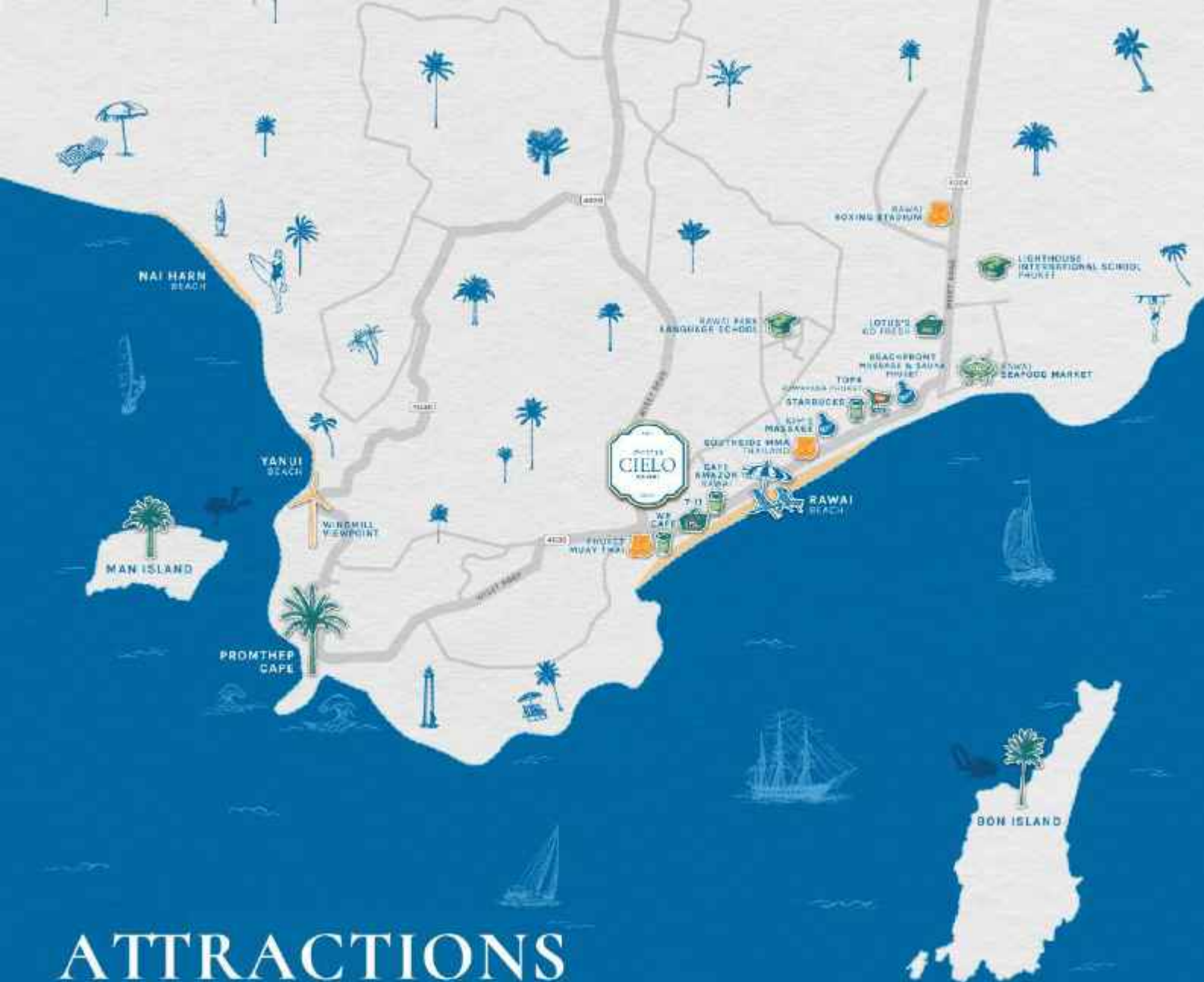


The Title Cielo Rawai offers a unique coastal living experience, combining modern luxury with the serene beauty of Phuket's most charming area.

## PHUKET ISLAND







# 

### 

RAWAI BEACH	250 M.
SANGCHAI BEACH	2.5 KM.
LAEM KA BEACH	2.5 KM.
PROMTHER CAPE	2.5 KM.
NAIHAN BEACH	3.4 KM.
CAPE KRATHING	5 KM.
NUI BEACH	7.6 KM.

### 

PHUKET MUAY THAI	450 M.
SOUTHSIDE MMA THAILAND	450 M.
RAWAI PARK	650 M.
KIM'S MASSAGE	800 M.
BEACHFRONT MASSAGE & SAUNA PHUKET	800 M.
BANANA BEACH BOAT TOURS	2.4 KM.
RAWAI BOXING STADIUM	2.8 KM.
MONSTER FISHING PARK PHUKET	3.4 KM.
GOLD SHOOTER CLUB	3.6 KM.
SEAVIEW ELEPHANT CAMP	4.5 KM.
AQUALITO KIDS WATER PARK	6.2 KM.
BLACK ROCK VIEWPOINT	7.1 KM.

### 

CAFE AMAZON RAWAI	250 M.
COSTA GRILL RESTAURANT RAWAI BEACH	400 M.
VIDA NOVA PHUKET	400 M.
LOBSTER MARKET RAWAI SEAFOOD	450 M.
MACAW CAFE & RESTAURANT PHUKET	450 M.
BAAN KLANG NAM	500 M.
MIRAGE RESTAURANT & CAFE	600 M.
SALALOY SEAFOOD	950 M.
RAWAI SEAFOOD MARKET	1.4 KM.
PAKPING CAFE & RESTAURANT	3.5 KM.

### 

RAWAI PARK LANGUAGE SCHOOL	500 M.
LANTHORN INTERNATIONAL SCHOOL PHUKET	2.7 KM.
CONVENIENCE STORE	
7-ELEVEN RAWAI BEACH	350 M.
TOPS RAYAYANA PHUKET	750 M.
LOTUS'S GO FRESH RAWAI	1.4 KM.

### 

BON ISLAND	1.7 KM. TO PIER
KAEW YAI ISLAND	2.5 KM. TO PIER
KAEW NOI ISLAND	2.5 KM. TO PIER
MAN ISLAND	2.8 KM. TO PIER



# DESIGN CONCEPT



---

## DESIGN

The Title Cielo Rawai perfectly combines Amalfi Coast charm with modern elegance. Four Mediterranean-style buildings with white facades and beautiful arches are proposed. Smooth surfaces, textured stone, and warm earth tones evoke Amalfi Coast textures and colors.

## INTERIOR

The Western, Mediterranean, and Shino-European styles of our interior design reflect Phuket's culture. Geometric shapes and organic upholstery are Chinese-Portuguese. The culture of Phuket is reflected in its vibrant, balanced hues, cool-toned walls, modern murals, and distinctive floor patterns influenced by local artists.

## LANDSCAPE

Our Amalfi Coast-inspired landscape design uses rustic materials and natural colors with local features. A sensory garden, sky pool, tea room, water treatment space, and sunset views create a peaceful getaway. The Mediterranean garden, with drought-resistant olive trees and cypress, recreates the Amalfi Coast in Phuket.



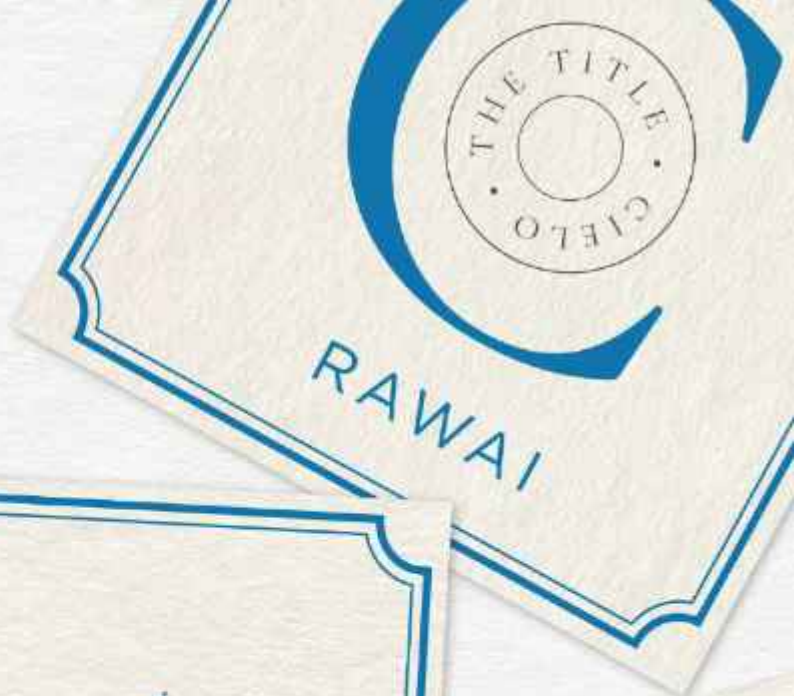
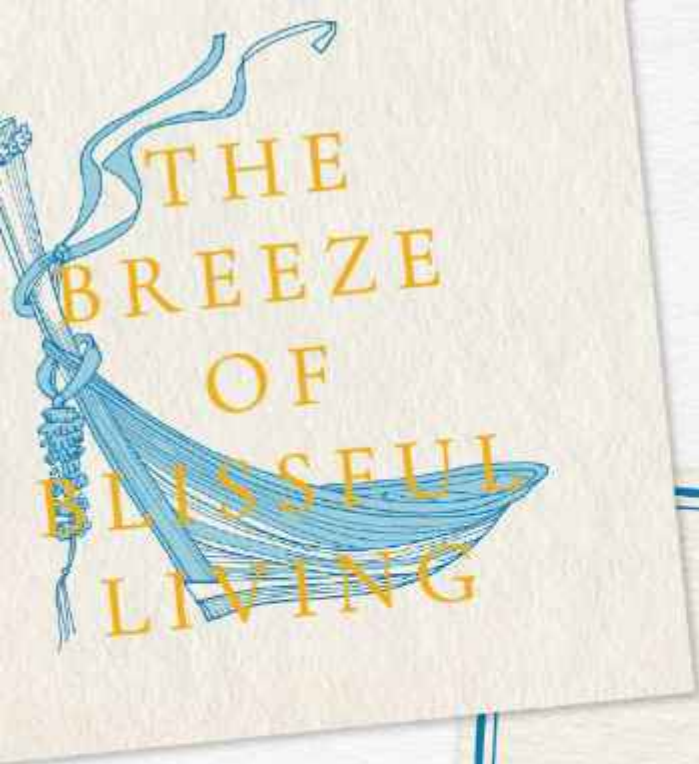
# PROJECT DETAILS

## THE TITLE RESIDENCE CIELO RAWAI

Company	Rhom Bho Property Public Company Limited		
Location	Tambon Rawai, Amphoe Mueang Phuket, Phuket		
Land Area	5-0-82.7 Rais (8,330.8 sq.m.)		
Condominium Type	Low Rise 4-5 storeys		
Building	4 residential buildings (A-D)		
	Building A	66	Units
	Building B	50	Units
	Building C	27	Units
	Building D	28	Units
Totla Unit	171 Units		
Carpark	89 lots, approx. 52%		
	(including double parking)		
Motorclecle parking	60 lots		









Mediterranean-inspired elegance meets Phuket's coastal charm.  
A perfect blend of timeless beauty and peaceful living.





Relax by the poolside, where the clubhouse offers effortless convenience and a peaceful retreat.









# 15

## FACILITIES



### OUTDOOR

#### 1st Floor

##### **BUILDING A, B**

1. Iconic Beach Island
  - Beach Coast Pool
  - Bubble Feature
  - Shallow Pool
  - Kids' Pool
  - Jacuzzi

##### **BUILDING C, D**

2. Natural Lagoon
  - Wellness Pool
  - Wellness & Aqua Therapy
  - Iconic Blue Grotto

##### **BUILDING D**

3. Organic Pool

#### 2nd Floor

##### **BUILDING A**

4. Sky Pool (Lap Pool)
  - Starry Shallow
  - Private Jacuzzi

#### Rooftop

##### **BUILDING A, B**

5. Sky Rooftop
  - Party Court
  - Sky Garden
  - Sunset View Point
  - Sky Bridge
  - Sky Bar

### INDOOR

#### 1st Floor

##### **BUILDING B (A connect)**

6. Semi-Outdoor Lobby
7. Lobby
8. Co-Working Area

##### **BUILDING C**

9. Kids' Zone
10. Game Area

##### **BUILDING D**

11. Tearoom

#### 2nd Floor

##### **BUILDING B (A connect)**

12. Fitness

#### 3rd Floor

##### **BUILDING B (A connect)**

13. Theater Room
14. Library Room
15. Meeting Room



# FACILITY

**BEACH COAST POOL**



**LOBBY ENTRANCE**





# FACILITY

CLUB HOUSE





# FACILITY

## SKY ROOFTOP





# FACILITY

## ICONIC BLUE GROTTO





# FACILITY

## TEAROOM





# FACILITY

SEMI OUTDOOR LOBBY



LOBBY





# MASTER PLAN



1 Bedroom



1 Bed plus



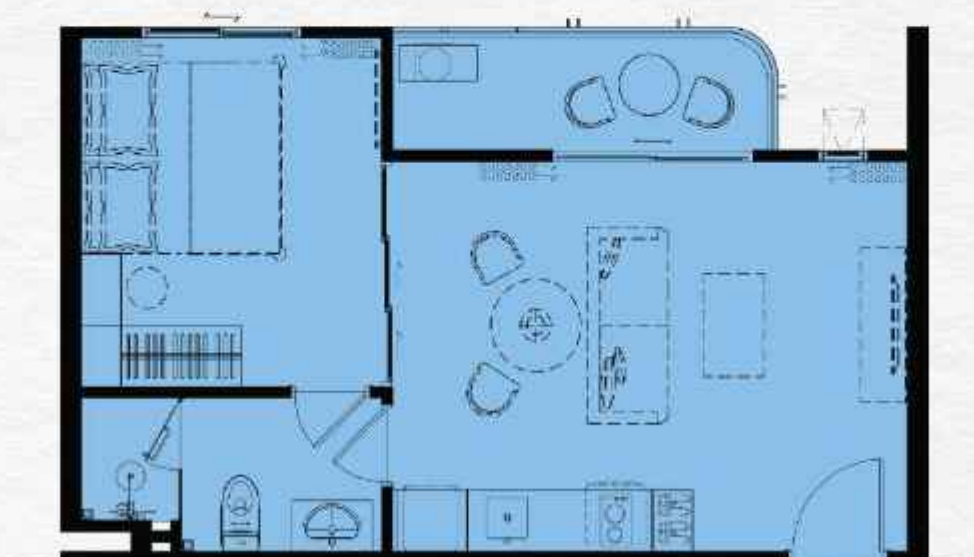
2 Bedroom





# 1 BEDROOM

## STANDARD



31-51 SQ.M.

ITEM		QUANTITY
1	<b>BUILT-IN PANTRY</b> (A) SINK (B) ELECTRIC HOB (C) HOOD	1 PC. 1 PC. 1 PC.
2	<b>BUILT-IN FURNITURE</b> (A) WARDROBE (B) DRESSING TABLE (C) DRESSING MIRROR (D) SHOE CABINET	1 SET 1 SET 1 PC. 1 SET
3	<b>OTHERS</b> (A) BALCONY LOUNGE SET (B) WATER HEATER (C) AIR CONDITIONING (D) WALLPAPER (E) CURTAIN & SHEER CURTAIN	1 SET 2 PCS. 2 PCS. 1 SET 1 SET



# 1 BEDROOM

(41 SQ.M.)





# 1 BEDROOM PLUS

## STANDARD



51-61 SQ.M.

ITEM	QUANTITY
<b>1 BUILT-IN PANTRY</b> (A) SINK (B) ELECTRIC HOB (C) HOOD	1 PC. 1 PC. 1 PC.
<b>2 BUILT-IN FURNITURE</b> (A) WARDROBE (B) DRESSING TABLE (C) DRESSING MIRROR (D) SHOE CABINET	1 SET 1 SET 1 PC. 1 SET
<b>3 OTHERS</b> (A) BALCONY LOUNGE SET (B) WATER HEATER (C) AIR CONDITIONING (D) WALLPAPER (E) CURTAIN & SHEER CURTAIN	1 SET 2 PCS. 3 PCS. 1 SET 1 SET



# 1 BEDROOM PLUS

(56 SQ.M.)





# 2 BEDROOM

## STANDARD



69-148 SQ.M.

ITEM		QUANTITY
1	<b>BUILT-IN PANTRY</b> (A) SINK (B) ELECTRIC HOB (C) HOOD	1 PC. 1 PC. 1 PC.
2	<b>BUILT-IN FURNITURE</b> (A) WARDROBE (B) DRESSING TABLE (C) DRESSING MIRROR (D) SHOE CABINET	2 SETS 2 SETS 1 PC. 1 SET
3	<b>OTHERS</b> (A) BALCONY LOUNGE SET (B) WATER HEATER (C) AIR CONDITIONING (D) WALLPAPER (E) CURTAIN & SHEER CURTAIN	1 SET 2 PCS. 3 PCS. 1 SET 1 SET



## 2 BEDROOM (81 SQ.M.)







## ROOM TYPE & PRICE RANGE

TYPE	SIZE	EARLY BIRD PRICE
1 BEDROOM	31 - 51 SQ.M.	3,875,000 - 8,058,000 MB.
1 BEDROOM PLUS	51 - 61 SQ.M.	6,669,000 - 9,821,000 MB.
2 BEDROOM	69 - 148 SQ.M.	8,970,999 - 16,724,000 MB.





\*THE IMAGES SHOWN ARE COMPUTER GENERATED AND CHANGE CAN BE APPLIED WITHOUT NOTICE. ALL RIGHTS RESERVED.





EMAIL: [Sales@rhombho.co.th](mailto:Sales@rhombho.co.th)



PHONE: +66 63 642 8111



WEBSITE: <https://bit.ly/3Xfv5SV>