

# VIP GREAT HILL

CONDOMINIUM

**READY  
TO MOVE IN**



[WWW.VIPJDGROUP.COM](http://WWW.VIPJDGROUP.COM)

## PROJECT DETAIL



### PROJECT NAME

VIP GREAT HILL

### LOCATION

Nai Yang Beach, Phuket

### TOTAL UNIT

215 Sets

### PROJECT DETAIL

7-Storey Condominium

(1st floor is parking lot, 2-7 floors is public accommodation and condominium)

### UNIT TYPES

Type A 20.5 sq.m.

Type D 32.3 sq.m.

Type B 21.9 sq.m.

Type E 32.4 sq.m.

Type C 26 sq.m.

Type F 26.25 sq.m.

### FACILITIES

Parking lot (1st floor)

Reception lobby (2nd floor)

Rest area (2nd floor)

Fitness room (2nd floor)

Swimming pool (2nd floor)

Roof garden (3rd floor)

Roof garden

24-hour security service

The seven-storey condominium offers units ranging from 20.5 to 32.4 square meters, complimented by world-class amenities including an infinity-edge swimming pool, a full fitness gym and a landscaped rooftop garden offering breathtaking views of Nai Yang's natural beauty. Ranging in price from 1.5 to 2.3 million THB, the remaining units offer incredible value and give you access to the luxury lifestyle of northern Phuket without the hefty price tag.



VIP GREAT HILL offers boutique condominium living in the heart of Phuket's glamorous and exclusively northern peninsula. It is 100% completed and ready for you to move in today!

The modern and stylish 215-unit development is situated adjacent to the stunning white sands and gentle surf of Nai Yang Beach, with its lush tropical scenery providing the perfect backdrop to the leisurely lifestyle and welcoming atmosphere of Phuket.

Interest in the project has been incredibly strong, with eager investors from all around the world keen to secure their unit and more than 50% of the project has already been sold. With 25% of the freehold quota still available to foreign investors you will need act quickly to secure a unit in this sought-after development brought to you by the Phuket property development experts at VIP Thailand Group.

The strong sales results show that buyers in the know appreciate the incredibly convenient location of this project. With the airport just a breezy four-minute drive away, reaching your unit at VIP GREAT HILL is the essence of convenience, leaving you more time to enjoy your vacation. Phuket International Airport offers dozens of daily flights that connect to all major international hubs, putting the entire world right on your doorstep.





# LOCATION



## NAI YANG BEACH, PHUKET

4 minutes drive from the airport

Once you arrive, you will find yourself surrounded by some of the finest restaurants on the island, a plethora of boutique shopping experiences and a range of outdoor activities that will keep you fully occupied. The world-famous Laguna Phuket Resort Complex is just a short scenic drive away, where you can enjoy a round on Phuket's premier 18-hole golf course and follow it up with a 5-star dining experience at one of dozens of exclusive restaurants and bars that dot the area.

Further afield you can daytrip to soak up the spectacular natural beauty of the Andaman region, including the iconic limestone mountain seascapes of Phang Nga Bay and the lush rainforests, lakes and beaches of Sirinat and Khao Phra Taew National Parks. After you've had your fill of natural beauty you can immerse yourself in the vibrant and diverse cultures of Phuket. Start your cultural immersion by savouring the pungent and fiery Southern-Thai cuisine or photographing the intricate architecture of the many temples and shrines that play host to a yearly calendar of festivals.

With Phuket rebounding at breakneck speed following international travel restrictions, now is the perfect time to secure your piece of paradise and choose your unit at VIP GREAT HILL before they are all sold out. Opportunities like this don't come often, so act now, and make your tropical lifestyle dreams a reality.



# MASTER PLAN

2ND FLOOR PLAN



KEY PLAN

- 1 DROP OFF
- 2 PARKING / DROPOFF
- 3 LOBBY INFORMATION
- 4 MAILBOX
- 5 OFFICE
- 6 GARDEN WALKWAY
- 7 TOILET
- 8 POOL
- 9 OUTDOOR SHOWER
- 10 FITNESS

3RD FLOOR PLAN



4TH FLOOR PLAN



5TH FLOOR PLAN



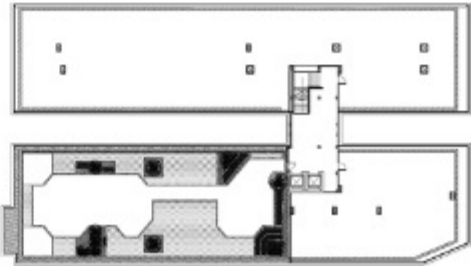
6TH FLOOR PLAN



7TH FLOOR PLAN



ROOF TOP FLOOR PLAN





# UNIT PLAN

## TYPE A

20.5 sq.m.



## TYPE B

21.9 sq.m.



## TYPE C

26 sq.m.



## TYPE D

32.3 sq.m.



## TYPE E

32.4 sq.m.

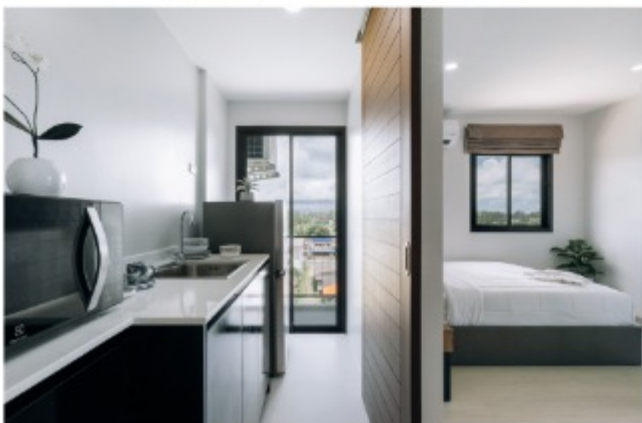


## TYPE F

26.25 sq.m.

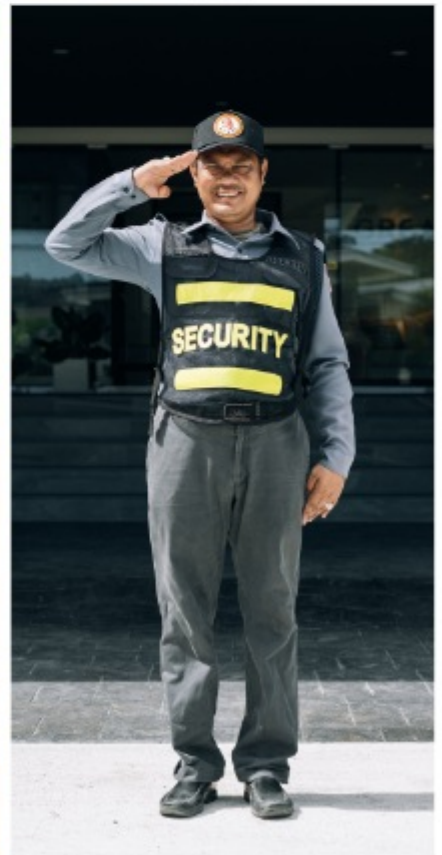
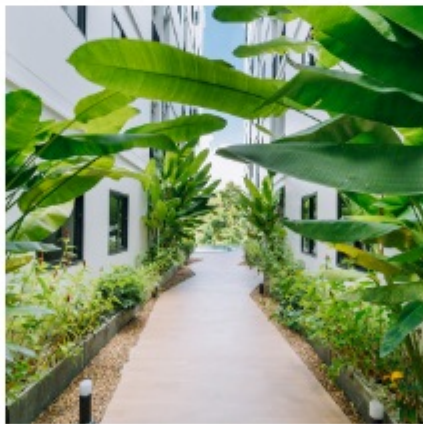


# INTERIOR





# FACILITIES





## SURROUNDINGS

### LANDSCAPE

Nai Yang Beach	10	minutes by walk
Mai Khao Beach	15	minutes by car
Bang Tao Beach	15	minutes by car
Sirinart National Park	5	minutes by car
Khao Phra Theao National Park	10	minutes by car

### SHOPPING

Family Mart	3	minutes by walk
7 Eleven	10	minutes by walk
Lotus	3	minutes by car
Laguna Resort	15	minutes by car
Dream Beach Club	15	minutes by car
Robinson Lifestyle Mall	20	minutes by car
Boat Avenue Mall	24	minutes by car





## ★ ENTERTAINMENT

Blue Canyon Country Club	9	minutes by car
Mission Hills Phuket Golf Club	15	minutes by car
International Wake Park	14	minutes by car
Blue Tree Phuket	29	minutes by car

## 🎓 EDUCATION

UWC Thailand: United World College	15	minutes by car
---------------------------------------	----	----------------

## ⚕️ MEDICAL

Thalang Hospital	15	minutes by car
------------------	----	----------------



# VIP GREAT HILL CONDOMINIUM

- VIP THAILAND, quality assurance
- 4 minutes drive from the airport
- The perfect place for investment and life
- Low price, no investment pressure
- Guarantee return program
- EIA approved

## DEVELOPED PROJECT



**VIP KATA  
CONDOMINIUM**

(KATA BEACH)



**VIP MERCURY  
CONDOMINIUM**

(NAIHARN & RAWAI BEACH)  
(WYNDHAM LA VITA)



**VIP GALAXY  
VILLA**

(NAIHARN & RAWAI BEACH)

NAI YANG BEACH | PHUKET | THAILAND

Any size picture, data, text description or other information involved in this document is for reference only, and the final approval document of the government and the sales contract signed by both parties shall prevail.